

**AUTUMN/WINTER  
2023/24**

**WEEK 1**

**WEEK COMMENCING**

September 18, October 9,  
October 30, November 20,  
December 11, January 1,  
January 22, February 12



Vegetarian meals are available upon request

**MAIN MEAL**

**DESSERT**

**MONDAY**

Margherita pizza **Gluten Milk Soya**  
pommes noisette **Milk**  
vegetable sticks

**OR**

Jacket potato with baked beans,  
cheese **Milk** or tuna mayonnaise **Egg Fish**  
& mixed salad



Mixed berry mousse  
**Milk**  
& apple wedge  
**OR**  
Fruit



**TUESDAY**

Spaghetti Bolognese **Gluten Fish**  
garlic bread **Gluten Milk Soya**  
crunchy vegetables

**OR**

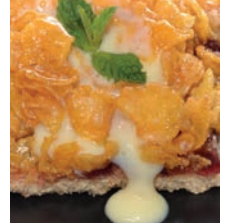
Jacket potato with baked beans,  
cheese **Milk** or tuna mayonnaise **Egg Fish**  
& mixed salad



Cornflake tart **Gluten**  
Sulphur Dioxide  
& custard **Milk**

**OR**

Fruit



**WEDNESDAY**

Southern style burger in a bun  
**Gluten Egg Milk Sesame**  
jacket wedges, carrot sticks  
& ranch salad **Egg**

**OR**

Jacket potato with baked beans,  
cheese **Milk** or tuna mayonnaise **Egg Fish**  
& mixed salad



Fruit flapjack **Gluten**

**OR**

Fruit



**THURSDAY**

Roast turkey, stuffing & gravy **Gluten**  
roast OR mashed potatoes  
cabbage & carrots

**OR**

Jacket potato with baked beans,  
cheese **Milk** or tuna mayonnaise **Egg Fish**  
& mixed salad



Cheese & crackers  
**Gluten Milk**

**OR**

Fruit



**FRIDAY**

MSC fish cake **Gluten Fish**  
diced potatoes, garden peas,  
crunchy veg & tomato ketchup

**OR**

Jacket potato with baked beans,  
cheese **Milk** or tuna mayonnaise **Egg Fish**  
& mixed salad



Apple muffin  
**Gluten Egg**

**OR**

Fruit



**ALSO SERVED DAILY:** Best of both bread **Gluten** and **Soya** Seasonal vegetables available daily, Coleslaw **Egg** when served.

[www.nottinghamshire.gov.uk/schoolmeals](http://www.nottinghamshire.gov.uk/schoolmeals)



**Nottinghamshire  
County Council**

# AUTUMN/WINTER 2023/24

## WEEK 2

### WEEK COMMENCING

September 4, September 25,  
October 16, November 6,  
November 27, December 18,  
January 8, January 29



Vegetarian meals are available upon request

### MAIN MEAL

### DESSERT

MONDAY

Quorn dippers **Gluten**  
roast baby potatoes  
sweetcorn & cucumber sticks  
**OR**  
Jacket potato with baked beans,  
cheese **Milk** or tuna mayonnaise **Egg Fish**  
& mixed salad



Chocolate mousse **Milk**  
& apple wedge  
**OR**  
Fruit **Milk**



TUESDAY

Nottinghamshire sausage & gravy  
**Gluten Sulphur Dioxide**  
Yorkshire pudding **Egg Gluten Milk**  
mashed potato, broccoli & carrots  
**OR**  
Jacket potato with baked beans,  
cheese **Milk** or tuna mayonnaise **Egg Fish**  
& mixed salad



Jelly & fruit  
**OR**  
Fruit

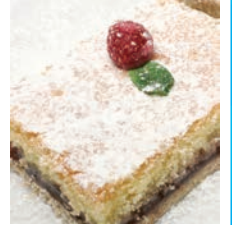


WEDNESDAY

Cheesy tomato pasta **Gluten Milk**  
garlic bread **Gluten Milk Soya**  
carrot & cucumber sticks  
**OR**  
Jacket potato with baked beans,  
cheese **Milk** or tuna mayonnaise **Egg Fish**  
& mixed salad



Bakewell tart  
**Egg Gluten Sulphur Dioxide**  
& custard **Milk**  
**OR**  
Fruit



THURSDAY

Roast pork, stuffing & gravy **Gluten**  
Yorkshire pudding **Milk Egg Gluten** roast OR  
mashed potato, cabbage & fresh carrots  
**OR**  
Jacket potato with baked beans,  
cheese **Milk** or tuna mayonnaise **Egg Fish**  
& mixed salad



Honey & oatmeal  
cookie **Gluten**  
**OR**  
Fruit



FRIDAY

MSC fish finger wrap **Gluten Fish**  
Pommes noisette **Milk**, crunchy veg,  
sweetcorn & tomato ketchup  
**OR**  
Jacket potato with baked beans,  
cheese **Milk** or tuna mayonnaise **Egg Fish**  
& mixed salad



Strawberry ice-cream  
tub **Milk**  
**OR**  
Fruit



**ALSO SERVED DAILY:** Best of both bread **Gluten** and **Soya** Seasonal vegetables available daily, Coleslaw **Egg** when served.

[www.nottinghamshire.gov.uk/schoolmeals](http://www.nottinghamshire.gov.uk/schoolmeals)



Nottinghamshire  
County Council

# AUTUMN/WINTER 2023/24

## WEEK 3

### WEEK COMMENCING

September 11, October 2,  
October 23, November 13  
December 4, December 25,  
January 15, February 5



Vegetarian meals are available upon request

### MAIN MEAL

### DESSERT

#### MONDAY

Vegan roll & gravy **Gluten**  
baby roast potatoes  
garden peas & fresh carrots

**OR**

Jacket potato with baked beans,  
cheese **Milk** or tuna mayonnaise **Egg Fish**  
& mixed salad



Chocolate brownie  
**Gluten**  
**OR**  
Fruit



#### TUESDAY

Meatballs in tomato sauce **Gluten Egg**  
with pitta bread **Milk Soya**  
Tilda rice & crunchy vegetables

**OR**

Jacket potato with baked beans,  
cheese **Milk** or tuna mayonnaise **Egg Fish**  
& mixed salad



Fruit yoghurt **Milk**  
**OR**  
Fruit



#### WEDNESDAY

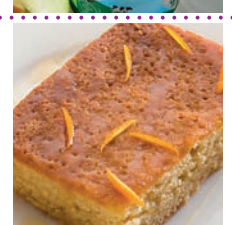
Pasta Neapolitan **Milk Gluten**  
garlic bread **Milk Gluten Soya**  
sweetcorn cobette

**OR**

Jacket potato with baked beans,  
cheese **Milk** or tuna mayonnaise **Egg Fish**  
& mixed salad



Honey cake  
**Milk Egg Gluten**  
& custard **Milk**  
**OR**  
Fruit



#### THURSDAY

Roast Gammon & gravy,  
Yorkshire pudding **Milk Egg Gluten**  
roast OR mashed potatoes  
carrots & broccoli

**OR**

Jacket potato with baked beans,  
cheese **Milk** or tuna mayonnaise **Egg Fish**  
& mixed salad



Fruit cookie **Gluten**  
**OR**  
Fruit



#### FRIDAY

MSC breaded fish portion **Gluten Fish**  
oven chips, garden peas & sweetcorn  
tomato ketchup

**OR**

Jacket potato with baked beans,  
cheese **Milk** or tuna mayonnaise **Egg Fish**  
& mixed salad



Butterscotch tart  
**Milk Gluten**  
**OR**  
Fruit



**ALSO SERVED DAILY:** Best of both bread **Gluten** and **Soya** Seasonal vegetables available daily, Coleslaw **Egg** when served.

[www.nottinghamshire.gov.uk/schoolmeals](http://www.nottinghamshire.gov.uk/schoolmeals)



Nottinghamshire  
County Council